

# CHELSEA® 680 SERIES

## Two Gear Heavy Duty PTO for Mechanical Transmission

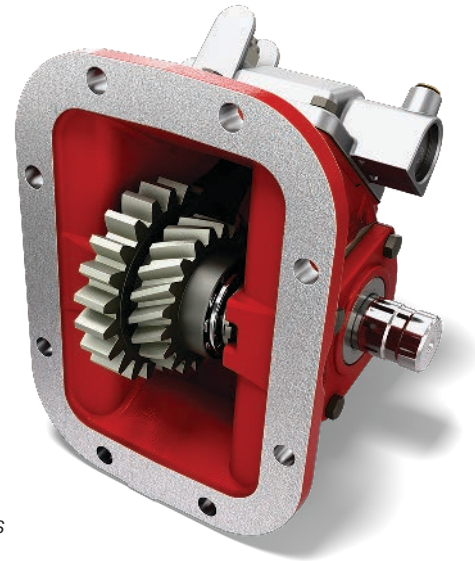
The Chelsea 680 PTO features a cast iron housing, cast iron bearing caps, and a press fit idler pin with tapered cone bearings and one-piece input gears to give it the highest torque rating and longest service life possible. The space saving air shift cover provides maximum clearance in tight spaces. It offers a large variety of output options including Chelsea's popular 360° rotatable and greaseable pump mount options. It has four internal speed ratios and multiple shift options to make this one versatile PTO. Take advantage of Chelsea PTO technology to increase performance and lower costs.

### Applications:

- Aerial
- Fire & Rescue
- Dump Trucks & Trailers
- Service Trucks
- Blower & Vacuum

### Product Features and Benefits:

- Coverage – Excellent for transmissions with 8-Bolt openings
- Housing – Deep mount housing option for Mack applications
- Torque – Designed for higher torque applications such as pneumatic blowers
- Outputs – Numerous output options
- Shift Options – Multiple shift options
- Power – Torque ratings up to 375 lb-ft
- Confidence – Two Year Warranty

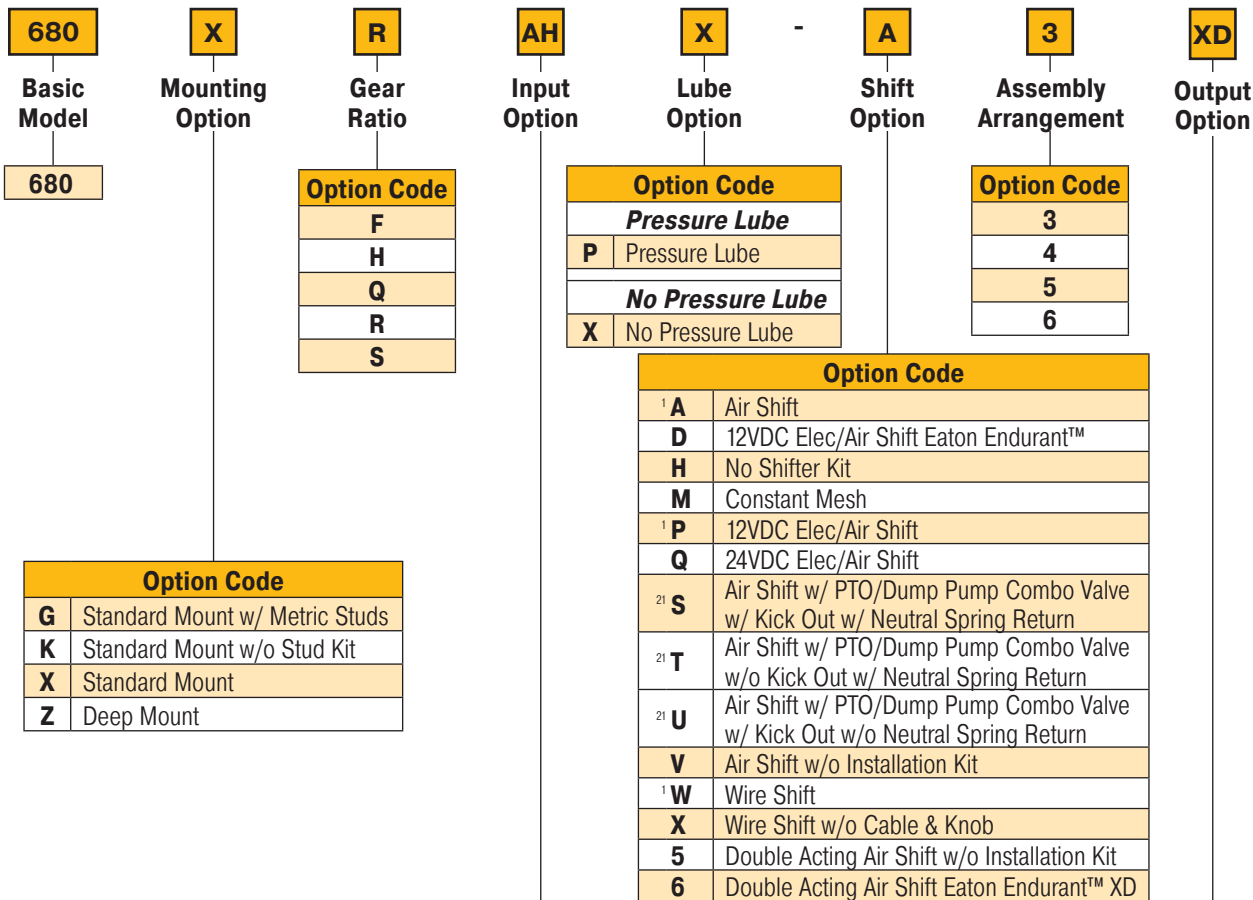


*680 Series*



# 680 Series Power Take-Off – Multiple Transmission Options

## Model Number Designator



Input Gear Designator
680*FAH
680*FDA
<sup>59</sup> 680*FLZ
680*FME
680*HAH
<sup>59</sup> 680*HLZ
680*HME
680*CAH
680*CDA
680*QME
680*RAH
<sup>59</sup> 680*RLZ
680*SAH
680*SDA

Option Code	
<b>Driveline Output</b>	
<b>XD</b>	Rd Standard Shaft (1-1/4" - 5/16" Key)
<b>XV</b>	1410 Series Companion Flange
<b>XX</b>	1-1/4" Tapered Output Shaft w/ Keyway
<b>Pump Mount</b>	
<b>AF</b>	SAE B 2 or 4-Bolt Flange, SAE BB Shaft (1" - 15T)
<b>AK</b>	SAE B 2-Bolt Flange, SAE B Shaft (7/8" - 13T)
<b>AZ</b>	SAE B 4-Bolt Flange, SAE C Shaft (1-1/4" - 14T)
<b>GA</b>	Greaseable SAE B 2-Bolt Rotatable Flange, SAE B Shaft (7/8" - 13T)
<b>GB</b>	Greaseable SAE B 4-Bolt Rotatable Flange, SAE B Shaft (7/8" - 13T)
<b>GF</b>	Greaseable SAE B 2 or 4-Bolt Flange, SAE BB Shaft (1" - 15T)
<b>GH</b>	Greaseable SAE 2 or 4-Bolt (1" - 15T)
<b>GK</b>	Greaseable SAE B 2 or 4-Bolt Flange, SAE B Shaft (7/8" - 13T)
<sup>59</sup> <b>GQ</b>	Greaseable SAE B 2 or 4-Bolt Flange, SAE B Shaft (7/8" - 13T)
<b>GR</b>	Greaseable Chelsea Special (Cloverleaf), SAE B Shaft (7/8" - 13T)
<b>GY</b>	Greaseable DIN 5462 Pump Mount, DIN 5462 Shaft (B8x32x36)
<b>GZ</b>	Greaseable SAE B 4-Bolt Flange, SAE C Shaft (1-1/4" - 14T)
<b>RA</b>	Rotatable SAE B 2-Bolt Flange, SAE B Shaft (7/8" - 13T)
<b>RB</b>	Rotatable SAE B 4-Bolt Flange, SAE B Shaft (7/8" - 13T)
<b>RC</b>	Rotatable SAE A 2-Bolt Flange, SAE A Shaft (5/8" - 9T)
<b>RD</b>	Rotatable SAE A 2-Bolt Flange, SAE B Shaft (7/8" - 13T)
<b>RE</b>	Rotatable SAE B 4-Bolt Flange, SAE BB Shaft (1" - 15T)
<b>RF</b>	Rotatable SAE B 2-Bolt Flange, SAE BB Shaft (1" - 15T)
<b>RJ</b>	Rotatable SAE B 2 or 4-Bolt Flange, SAE BB Shaft (1" - 15T)
<b>RK</b>	Rotatable SAE B 2 or 4-Bolt Flange, SAE B Shaft (7/8" - 13T)
<sup>79</sup> <b>RY</b>	Rotatable DIN 5462 Pump Mount, DIN 5462 Shaft (B8x32x36)
<b>XE</b>	SAE A 2 or 4-Bolt Flange, SAE A Shaft (5/8" - 9T)
<b>XK</b>	SAE B 2 or 4-Bolt Flange, SAE B Shaft (7/8" - 13T)
<sup>59</sup> <b>XQ</b>	SAE B 2 or 4-Bolt Flange, SAE B Shaft (7/8" - 13T)
<b>XR</b>	Chelsea Special (Cloverleaf), SAE B Shaft (7/8" - 13T)
<b>XY</b>	DIN 5462 Pump Mount, DIN 5462 Shaft (B8x32x36)

<sup>1</sup> Includes mounting parts

<sup>21</sup> Includes installation kit, console sold separately

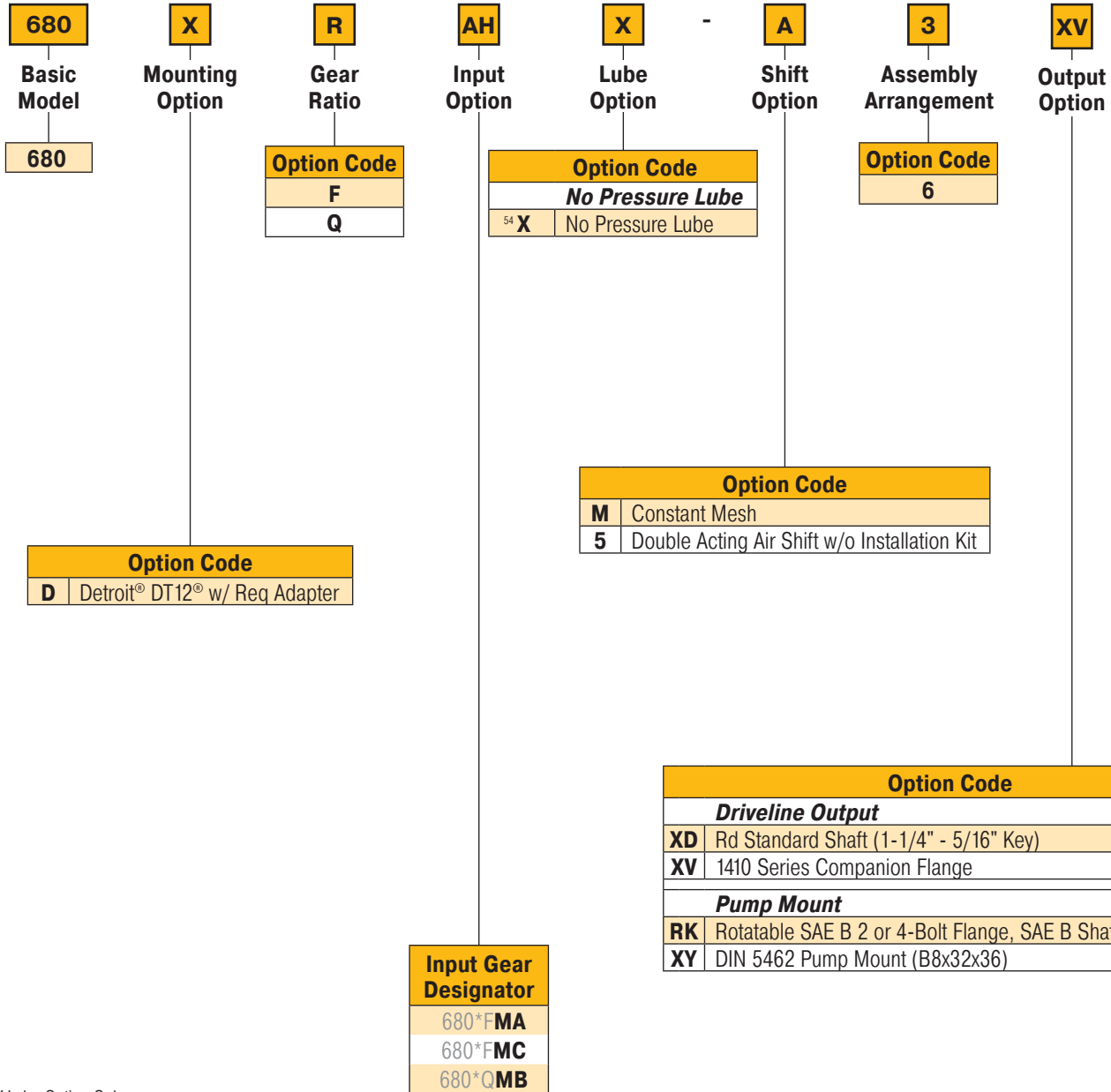
<sup>59</sup> Same as XK except rotated 90°

<sup>75</sup> Must use D or V shift options only

<sup>79</sup> Flooded cavity

# 680 Series Power Take-Off – For Detroit® DT12®

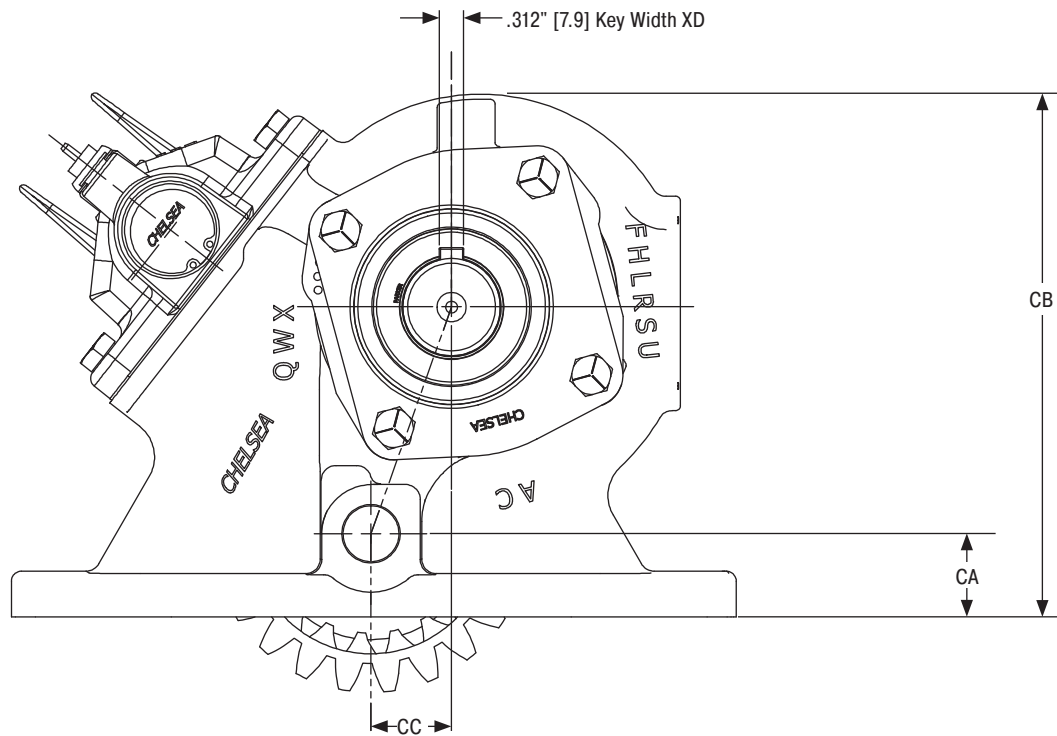
## Model Number Designator



<sup>54</sup> X Lube Option Only

# 680 Series Power Take-Off – Multiple Transmission Options

Dimensions & Specifications – For PTO output information see application catalog

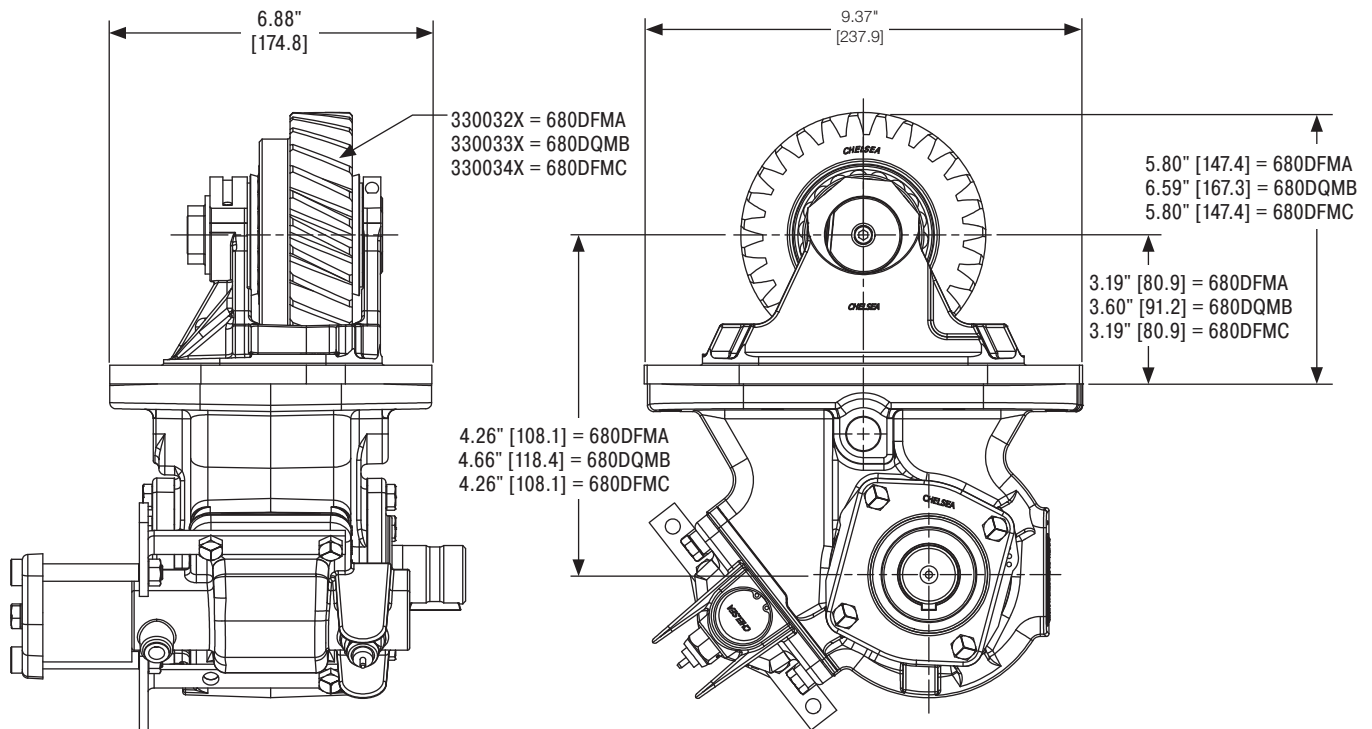


PTO Series	CA	CB	PTO Series	CC	CD
680 Series (D, G & X Mount)	1.07" [27.1]	6.71" [170.4]	680 Series (F, S & U Ratios)	1.40" [35.6]	3.01" [76.4]
680 Series (Z Mount)	.93" [23.6]	6.57" [166.8]	680 Series (Q & W Ratios)	1.03" [26.2]	2.91" [73.9]
680 Series (E Mount)	.71" [18.0]	6.35" [161.2]			

Specifications Chart	Approximate Weight: 28.2 lbs. [12.8 kg]				
	680*F	680*H	680*Q	680*R	680*S
Intermittent Torque Rating lb-ft [N-m]	375 [508]	375 [508]	375 [508]	350 [475]	325 [441]
HP Rating for Intermittent Service					
At 500 RPM of Output Shaft HP [kW]	36 [27]	36 [27]	36 [27]	33 [25]	31 [23]
At 1000 RPM of Output Shaft HP [kW]	71 [53]	71 [53]	71 [53]	67 [50]	62 [46]
At 1500 RPM of Output Shaft HP [kW]	107 [80]	107 [80]	107 [80]	100 [75]	93 [69]

# 680 Series Power Take-Off – For Detroit® DT12®

Dimensions & Specifications – For PTO output information see application catalog



Specifications Chart	Approximate Weight: 28.2 lbs. [12.8 kg]	
	680*F	680*Q
Intermittent Torque Rating lb-ft [N-m]	375 [508]	375 [508]
HP Rating for Intermittent Service		
At 500 RPM of Output Shaft HP [kW]	36 [27]	36 [27]
At 1000 RPM of Output Shaft HP [kW]	71 [53]	71 [53]
At 1500 RPM of Output Shaft HP [kW]	107 [80]	107 [80]

Parker Hannifin Corporation  
**Chelsea Products Division**  
 8225 Hacks Cross Road  
 Olive Branch, MS 38654 USA  
 phone 1-888-PH4-TRUK (1-888-744-8785)  
 chd\_support@support.parker.com  
 www.parker.com/chelsea

HY25-0098-B1/US October 2025

© 2025 Parker Hannifin Corporation

